



MF48-S

Intended for indoor use.

Project: _____	AIA# _____
Item #: _____ Qty: _____	SIS# _____
Model #: _____	

Mug Frosters

MF	MF24, MF36, MF48
-----------	------------------

Configurable Options

- | | |
|--|--|
| <p>Finish:</p> <ul style="list-style-type: none"> • Black vinyl-clad steel with galvanized steel back (-B) • Stainless steel front, sides, and back <p>Shelving:</p> <ul style="list-style-type: none"> • Two additional layers of shelves recommended for chilling glassware | <p>Legs:</p> <ul style="list-style-type: none"> • 6" <p>Casters:</p> <ul style="list-style-type: none"> • 4-1/8" • 2-7/8" • 1-1/2" |
|--|--|



Intertek
 EP 5016978
 Energy Performance
 Verified / Rendement
 Énergétique Vérifié



Intertek **Intertek**
 4004503
 Conforms to NSF/ANSI STD 7 and UL STD 471
 Certified to CSA STD C22.2 No. 120

Standard Features

- Self-contained refrigeration
- All stainless steel interior with radius corners for easy cleaning
- One-piece integral top and mullion design
- Easy to plan exterior dimensions: 24" front to back and 24", 36", or 48" left to right
- Automatic and manual defrost cycles
- Automatic condensate evaporator - no drain connection required
- Bottom rack for chilling stacked plates

Glastender, Inc. • 5400 N Michigan Rd • Saginaw, MI • 48604-9780 989.752.4275 • 800.748.0423 • Fax 989.752.4444 www.glastender.com	Approval/Notes:
Specifications subject to change without notice. For current specifications please visit our website.	

Mug Frosters

Specifications

		MF24	MF36	MF48
Dimensions	Length	24"	36"	48"
	Number of Sections	1	1	2
	Door Opening	n/a	n/a	n/a
Electrical	Electrical Supply	120V, 1 phase, 60 Hz, dedicated 15A circuit recommended		
	Full Load Amps	6.0		
	Plug Type	9 foot NEMA 5-15P grounded cord and plug which exits the back of refrigeration compartment*		
Refrigeration	Refrigerant	R290 - 125 grams, 4.59 oz., 0.28 pounds		
	Compressor	Reciprocating, 1/3 HP, 1300 BTUH, 0.11 Tons		
	Heat Rejection	2455 BTUH		
Operating Range		12°F to 20°F (-11°C to -7°C)		
Plumbing		Interior floor drain and condensate drain to automatic evaporator. No drain connection required †		
Weight Bearing Capacity		Countertops and other accessories should not exceed 500 pounds per door		

Materials

- Stainless steel parts include: top, door, interior and optional legs. Also, front, sides and back on '-S' models
- Black vinyl-clad steel parts include: front and sides on '-B' models
- Galvanized steel parts include: base on all models and exterior back on '-B' models

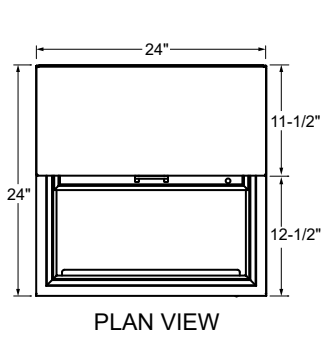
† Building conditions outside the guidelines of ASHRAE 55 and ASHRE 62.1 may need to be plumbed to a drain.

Capacities

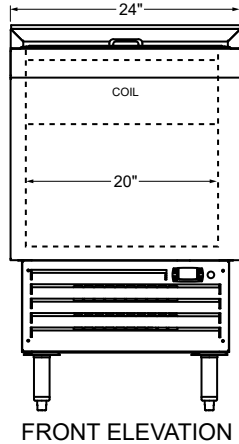
		MF24	MF36	MF48
Pint Glasses	Top Shelf	15	31	51
	Bottom Shelf	25	25	45
	Middle Shelf	15	31	51
	Total	55	87	147

Mug Frosters

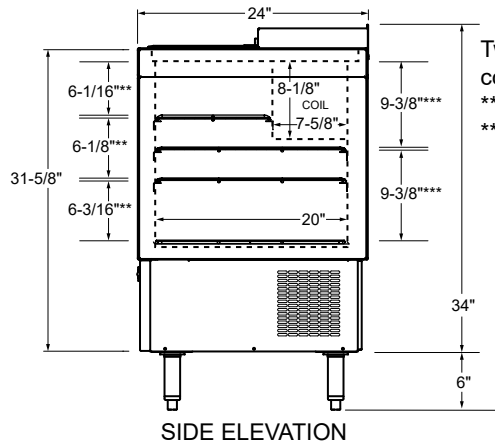
Drawings



MF24*

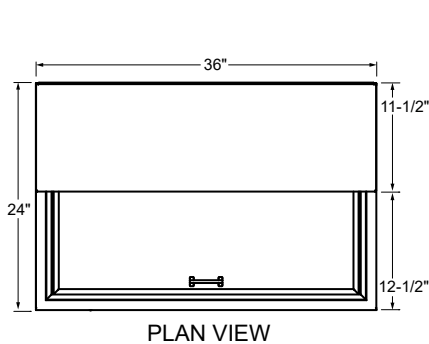


FRONT ELEVATION



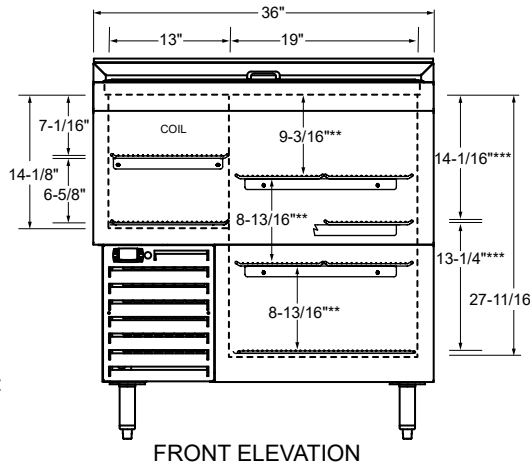
SIDE ELEVATION

Two shelf configurations:
 ** Thirds
 *** Halves

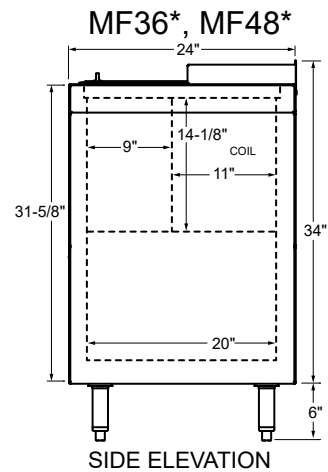


MF36*

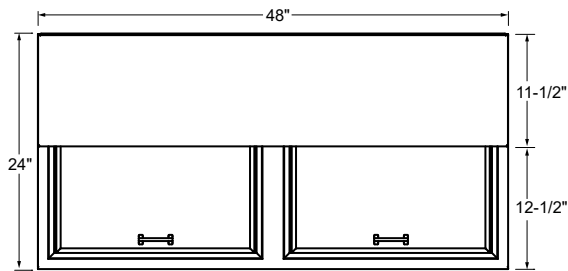
Two shelf configurations:
 ** Thirds
 *** Halves



FRONT ELEVATION

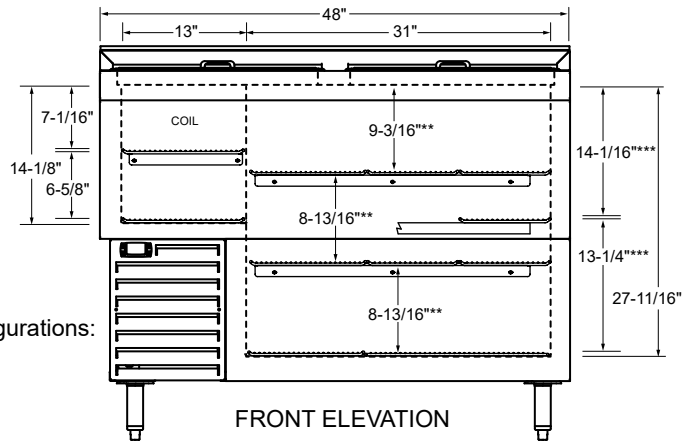


SIDE ELEVATION

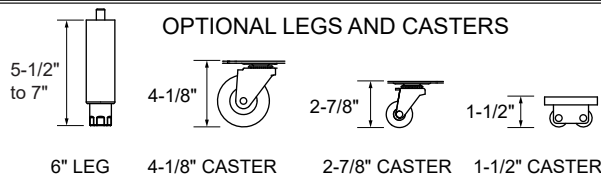


MF48*

Two shelf configurations:
 ** Thirds
 *** Halves



FRONT ELEVATION



Note: Shelves are optional and are recommended for chilling glassware. All models shown with optional 6" legs.