

ELEVATION

BY GLASTENDER

Project: _____	AIA# _____
Item #: _____ Qty: _____	SIS# _____
Model #: _____	

Liquor Steps

E-LD	E-LD-8, E-LD-12, E-LD-18
-------------	--------------------------

Standard Features

- All stainless steel
- Two (2) levels of liquor bottle storage
- Bottle retaining rails
- Open step-and-rail design
- Extra-wide steps for specialty liquor bottles
- Full extension locking liquor drawer with dividers
- Adjustable stainless steel bullet feet

Specifications

Legs

- 1-5/8" diameter, 16 gauge stainless steel

Materials

- 20 gauge stainless steel parts include: all components unless otherwise noted
- 18 gauge stainless steel parts include: leg pads
- 14 gauge stainless steel parts include: sides



E-LD-12



Intertek

4004503
Conforms to ANSI/NSF STD 2

Underbar installation instructions: <https://www.glastender.com/support/documents/manuals/underbar-installation-instructions>

Cleaning & care instructions: <https://www.glastender.com/support/documents/manuals/general-cleaning-and-care-instructions-for-stainless-steel>

Glastender, Inc. • 5400 N Michigan Rd • Saginaw, MI • 48604-9780
989.752.4275 • 800.748.0423 • Fax 989.752.4444
www.glastender.com

Approval/Notes:

Specifications subject to change without notice. For current specifications please visit our website.

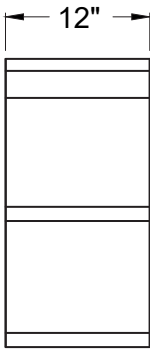
Elevation Liquor Steps

Dimensional Information

PLAN VIEWS



E-LD-8

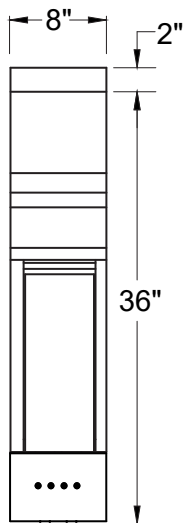


E-LD-12

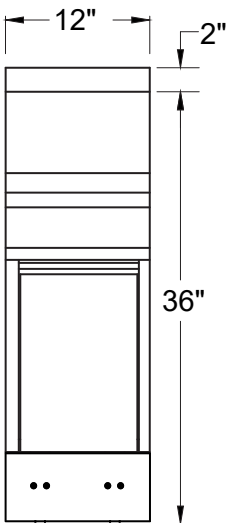


E-LD-18

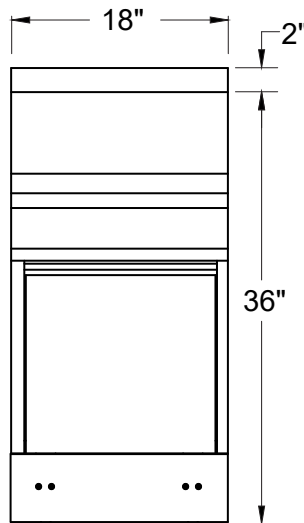
FRONT ELEVATIONS



E-LD-8



E-LD-12



E-LD-18

SIDE ELEVATION

