

# ELEVATION

BY GLASTENDER

Project: _____	AIA# _____
Item #: _____ Qty: _____	SIS# _____
Model #: _____	



E-DB-24

## Drainboards

<b>E-DB</b>	E-DB-12, E-DB-18, E-DB-24, E-DB-30, E-DB-36, E-DB-42, E-DB-48
-------------	--

### Standard Features

- All stainless steel construction
- Adjustable stainless steel bullet feet
- One-piece, seamless top and backsplash featuring 1/4" radius corners for easy cleaning
- Door(s) features integral handle and lock(s) standard
- Work surface consists of a drainboard top with drain pan and separate perforated insert for better air circulation.
- Intermediate shelf and floor are still removable after unit is plumbed and include radius corners
- Plumbing connection is made underneath the unit and does not interfere with shelf or floor.
- Smooth interior walls for easy cleaning and a finished appearance.
- All storage is on a level plane



**Intertek**  
4004503  
Conforms to ANSI/NSF STD 2  
Certified to CSA/CAN STD B45.4

### Specifications

#### Drain

- 1/2" welded tailpiece. Clear vinyl drain line is connected to the tailpiece at the factory. A 1/2" by 1/2" barbed plastic elbow is provided to make the connection at the bottom of the unit.

#### Legs

- 1-5/8" diameter, 16 gauge stainless steel
- Stainless steel bullet feet

#### Materials

- 20 gauge stainless steel parts include: all components unless otherwise noted
- 18 gauge stainless steel parts include: leg pads

Underbar installation instructions: <https://www.glastender.com/support/documents/manuals/underbar-installation-instructions>

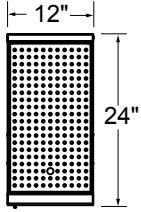
Cleaning & care instructions: <https://www.glastender.com/support/documents/manuals/general-cleaning-and-care-instructions-for-stainless-steel>

<b>Glastender, Inc.</b> • 5400 N Michigan Rd • Saginaw, MI • 48604-9780 989.752.4275 • 800.748.0423 • Fax 989.752.4444 <a href="http://www.glastender.com">www.glastender.com</a>	Approval/Notes:
Specifications subject to change without notice. For current specifications please visit our website.	

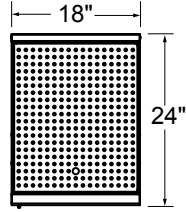
# Elevation Drainboards

## Drawings

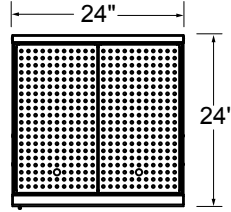
E-DB-12



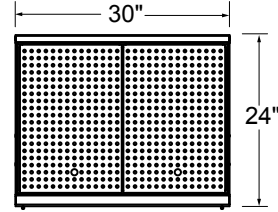
E-DB-18



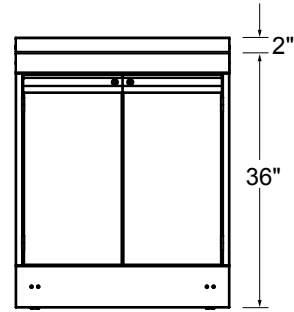
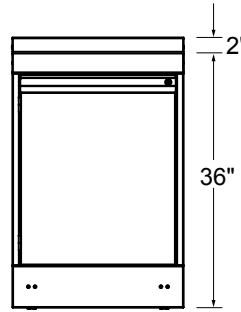
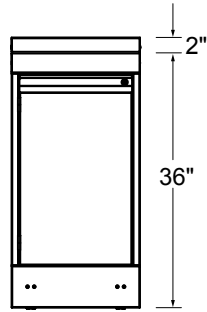
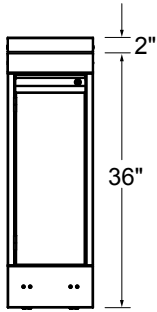
E-DB-24



E-DB-30

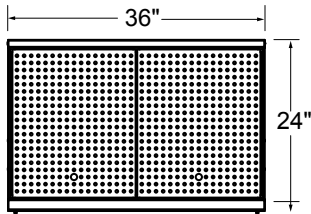


PLAN VIEWS

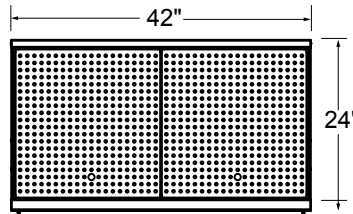


FRONT ELEVATIONS

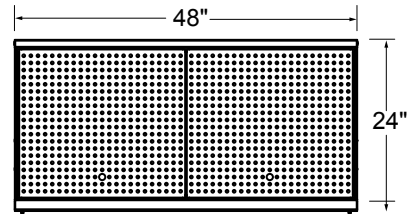
E-DB-36



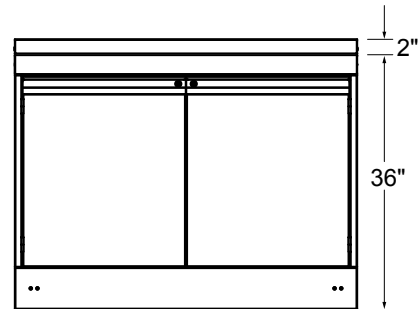
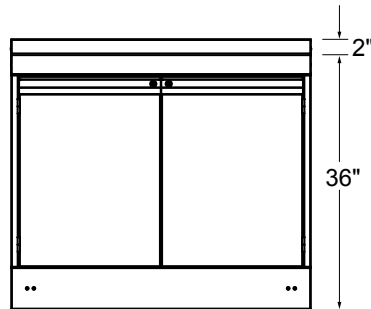
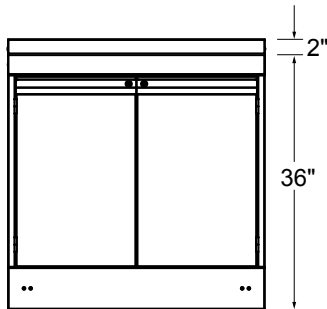
E-DB-42



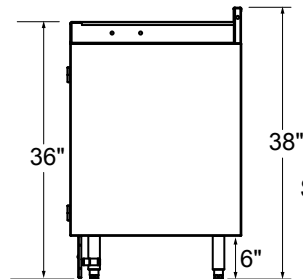
E-DB-48



PLAN VIEWS



FRONT ELEVATIONS



SIDE ELEVATION ALL MODELS

