

PP-12-SS  
(handles not included)

NOTE: To convert standard faucet to stout style faucet, specify accessory model number BT-CFG and add \$270 List per faucet.

\*NOTE: Pipe Pass-Thru Towers are manufactured to order and are not returnable.

## PIPE PASS-THRU TOWERS WITH DRAIN PAN

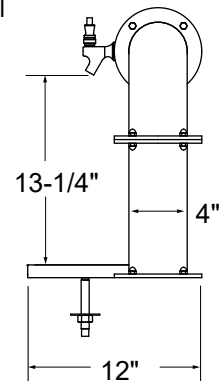
GRAINLINE FINISH		MIRROR FINISH		FAUCETS	WGT	WIDTH	SYSTEM TYPE
MODEL	LIST	MODEL	LIST				
PP-4-SS	\$7,340	PP-4-MF	\$8,271	4	44#	31-1/4"	Air Cooled
PP-4-SSR	\$7,257	PP-4-MFR	\$8,188	4	44#	31-1/4"	Glycol
PP-6-SS	\$8,197	PP-6-MF	\$9,159	6	49#	37-1/4"	Air Cooled
PP-6-SSR	\$8,088	PP-6-MFR	\$9,049	6	49#	37-1/4"	Glycol
PP-8-SS	\$9,071	PP-8-MF	\$10,063	8	54#	43-1/4"	Air Cooled
PP-8-SSR	\$8,933	PP-8-MFR	\$9,925	8	54#	43-1/4"	Glycol
PP-10-SS	\$10,090	PP-10-MF	\$11,115	10	61#	49-1/4"	Air Cooled
PP-10-SSR	\$9,929	PP-10-MFR	\$10,954	10	61#	49-1/4"	Glycol
PP-12-SS	\$10,949	PP-12-MF	\$12,005	12	67#	55-1/4"	Air Cooled
PP-12-SSR	\$10,763	PP-12-MFR	\$11,819	12	67#	55-1/4"	Glycol
PP-14-SS	\$11,849	PP-14-MF	\$12,930	14	73#	61-1/4"	Air Cooled
PP-14-SSR	\$11,629	PP-14-MFR	\$12,709	14	73#	61-1/4"	Glycol
PP-16-SS	\$12,743	PP-16-MF	\$13,852	16	78#	67-1/4"	Air Cooled
PP-16-SSR	\$12,499	PP-16-MFR	\$13,608	16	78#	67-1/4"	Glycol

### PRODUCT INFORMATION

(see PP Spec Sheet for complete details)

#### STANDARD FEATURES

- All stainless steel construction
- Includes surface mount drain pan with lift-out perforated inserts
- 1/4" shanks with 3/16" restriction lines
- Available in grainline finish or mirror finish
- Air cooled for direct-draw system or glycol cooled for recirculating system
- Available in 4, 6, 8, 10, 12, 14, and 16 faucet sizes
- All models include all stainless steel faucets and shanks to resist corrosion and prevent metallic leaching, making them ideal for both draft beer and wine applications



Side Elevation

#### RINSER FAUCET EXTENSION

Pipe Pass-Thru Tower drain pans can be manufactured with rinser faucet extensions to the left, right, or both sides of the drain pan. A rinser faucet extension will add to the overall length of the drain pan. Add the appropriate RFE upcharge when placing your order.

NOTE: Rinsler faucets not intended for use with towers mounted to a refrigerator due to risk of water line freeze up.

Rinsler faucet installation notes:

- Unit does not provide a 1" air gap.
- Must be installed with external backflow prevention to meet applicable federal, state, and local plumbing code requirements.
- Install in-line water pressure regulator (included).
- A separate shut-off valve is recommended (not included).

MODEL	DESCRIPTION	LIST
RFE	Rinsler faucet extension	\$762

