



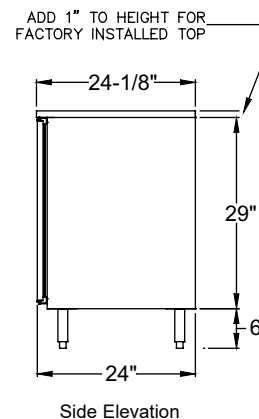
F1SL24 with compressor left, stainless door and top

**PRODUCT INFORMATION**

(see F1SL Spec Sheet for complete details)

**STANDARD FEATURES:**

- Self-contained
- All stainless steel interior construction
- Models with doors include three adjustable coated shelves per door
- Listed to NSF Standard 7



Side Elevation

\*NOTE: F1SL units are manufactured to order and are not returnable.

**FROSTERS - ONE ZONE, SIDE SERVICED, LOW PROFILE\***

MODEL	LIST	LENGTH	DOORS	DOOR				10 Oz.	6" High
				OPENING	WEIGHT	AMPS	HP	MUGS	PINTGLASSES
F1SL24	\$7,089	24"	1	17.5" W	180#	5.0	1/3	101	72
F1SL28	\$7,314	28"	1	20" W	195#	5.0	1/3	123	75
F1SL36	\$9,410	36"	2	12" W	230#	5.0	1/3	171	115
F1SL44	\$9,859	44"	2	16" W	255#	5.0	1/3	231	151
F1SL48	\$10,093	48"	2	18" W	280#	5.0	1/3	261	169

Base price only. See below for configurable options.

**ACCESSORIES**

MODEL	DESCRIPTION	LIST
DIP-17	Drawer insert for fractional stainless pans, 17.5" door opening (pans not included)	\$258
DIP-18	Drawer insert for fractional stainless pans, 18" door opening (pans not included)	\$264
DIP-20	Drawer insert for fractional stainless pans, 20" door opening (pans not included)	\$287



DIP-18  
Pans not included



Capable of storing specialty cocktail ice

Bar Refrigeration

\*NOTE: F1SL units are manufactured to order and are not returnable.

### Select Configurable Options:

#### VOLTAGE

120V/60HZ	No charge
220V/50HZ (export voltage)	\$307

#### REFRIGERATION COMPARTMENT LOCATION

Left	No charge
Right	No charge

#### REFRIGERATION COMPARTMENT COVER FINISH

Black vinyl-clad	No charge
Stainless steel	\$39
Jeweled stainless steel	\$232

#### DOOR/DRAWER OPTIONS

NOTE: Select options for EACH Door/Drawer Section

##### STYLE AND FINISH - PER SECTION

Door - Black vinyl-clad	No charge
Door - Unlaminated	No charge
Door - Stainless steel	\$48
Door - Jeweled stainless	\$252
Door - Laminated	\$288
Door - Glass, black vinyl-clad	\$734
Door - Glass, stainless steel	\$782
Door - Glass, jeweled stainless	\$986
Door - Glass, laminated	\$1,022
Drawers - Black vinyl-clad	\$2,381
Drawers - Unlaminated	\$2,381
Drawers - Stainless steel	\$2,429
Drawers - Jeweled stainless	\$2,633
Drawers - Laminated	\$2,669

##### DOOR HINGE LOCATION - PER DOOR

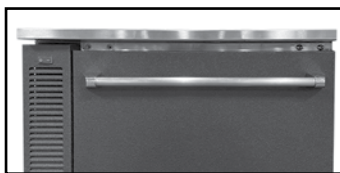
Left	No charge
Right	No charge

##### DOOR HANDLE - PER DOOR/DRAWER

Signature handle (doors only)	No charge
Pull-tab handle - stainless or black to match door; black for laminate	No charge
Tube handle	No charge



Drawer pull-tab handle



Drawer tube handle



Optional drawers include adjustable divider walls

#### TOP STYLE

	24"	28"	36"	44"	48"
No finished top	No charge				
Stainless top	\$440	\$465	\$519	\$575	\$601
Drainboard top	\$725	\$772	\$869	\$962	\$1,011

#### 4" HIGH STAINLESS SPLASHES

	24"	28"	36"	44"	48"
NOTE: Can only be ordered with stainless steel top					
Backsplash	\$161	\$170	\$186	\$200	\$206
Left side splash	\$161	\$161	\$161	\$161	\$161
Right side splash	\$161	\$161	\$161	\$161	\$161

#### LEFT SIDE FINISH

Black vinyl-clad	No charge
Stainless Steel	\$48

#### RIGHT SIDE FINISH

Black vinyl-clad	No charge
Stainless Steel	\$48

#### BACK FINISH

	24"	28"	36"	44"	48"
Galvanized steel	No charge				
Stainless steel*	\$365	\$377	\$404	\$431	\$446

\*NOTE: Stainless steel back option also includes stainless steel sides.

#### LED LIGHTING STYLE

Bright white (7,000k), standard	No charge
Warm white (3,500k)	No charge
Amber (2,700k)	No charge
Blue	No charge

#### LEG AND STAINLESS STEEL KICK RAILS

NOTE: Legs are required if kick rails are ordered.

	24"	28"	36"	44"	48"
6" legs	\$204	\$204	\$204	\$204	\$204
Front kick rail	\$127	\$133	\$142	\$153	\$158
Left side kick rail	\$127	\$127	\$127	\$127	\$127
Right side kick rail	\$127	\$127	\$127	\$127	\$127

#### CASTERS

	24"	28"	36"	44"	48"
4-1/8" casters	\$182	\$182	\$182	\$182	\$182
2-7/8" casters	\$176	\$176	\$176	\$176	\$176
1-1/2" casters	\$310	\$310	\$310	\$310	\$310



Signature handle



Pull tab handle



Tube handle

Bar Refrigeration