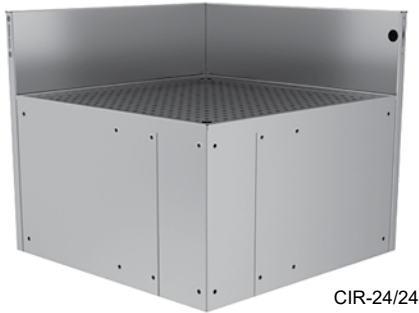


Corner drainboards are used when an underbar line-up turns, either 90° or less. The direction of the turn may be toward or away from the bartender. A turn that is toward the bartender requires an inside corner. A turn that is away from the bartender requires an outside corner. Corner drainboards are constructed using the same drain pan with separate removable perforated-insert design as all Glastender drainboards.

### PRODUCT INFORMATION

(see CIR Spec Sheet for complete details)



CIR-24/24

\*NOTE: These items are manufactured to order and are not returnable

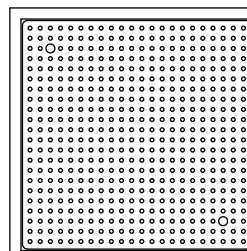
Corner Inside Rectangle Drainboards are for 90° inside turns only. The dimensions of the corner are specified in the model number. If the dimensions of each side are not the same, the longest dimension is specified second along with its location.

Corner drainboards are designed to mount between two pieces of underbar. However, corner drainboards can be used to mount between any two stable vertical surfaces. Corners should not be mounted to objects that are mobile or on casters.

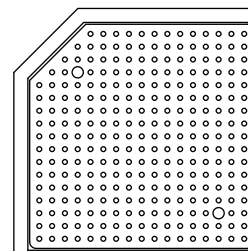
Because they are intended to mount between two vertical surfaces, corner drainboards do not come with legs. If one side of the corner does not have a vertical surface on which to mount, then a leg set must be ordered as an accessory.

### PLAN VIEWS

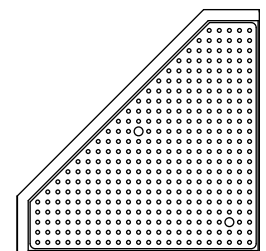
CIR-24/24



CIR-24/24-N



CIR-24/24-LN



### CORNER INSIDE RECTANGLE DRAINBOARDS

MODEL	LIST	LEFT	RIGHT	WEIGHT
CIR-19/19*	\$1,308	19"	19"	40#
CIR-19/24L	\$1,395	24"	19"	45#
CIR-19/24R	\$1,395	19"	24"	45#
CIR-19/30L*	\$1,498	30"	19"	50#
CIR-19/30R*	\$1,498	19"	30"	50#
CIR-24/24	\$1,495	24"	24"	50#
CIR-24/30L	\$1,617	30"	24"	60#
CIR-24/30R	\$1,617	24"	30"	60#

### CORNER INSIDE RECTANGLE DRAINBOARDS WITH CHAMFERED BACK CORNER

MODEL	LIST	LEFT	RIGHT	WEIGHT
CIR-19/19-N*	\$1,355	19"	19"	40#
CIR-24/24-N*	\$1,543	24"	24"	50#
CIR-24/24-LN*	\$1,595	24"	24"	50#

Bar Fabrication - Main Line

# Corner Inside and Outside L Shape Drainboards\*

Pricing effective January 1, 2026

### PRODUCT INFORMATION

(see CILB and COLB Spec Sheets for complete details)



CILB



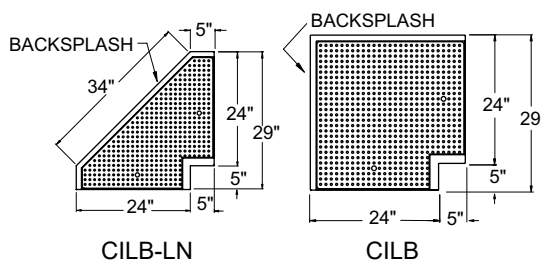
COLB

### CORNER INSIDE & OUTSIDE L SHAPE DRAINBOARDS\*

MODEL	LIST	DEPTH	TURN	WEIGHT
CILB	\$1,925	24"	Inside	50#
COLB	\$1,933	24"	Outside	60#
CILB-LN	\$1,940	24"	Inside	50#
COLB-LN	\$1,829	24"	Outside	55#

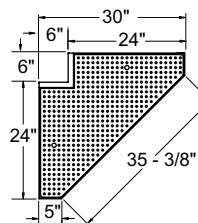
Corner Inside and Outside L Shape Drainboards are for 90° inside or outside turns. They are designed to align with 24" deep underbar.

### PLAN VIEWS

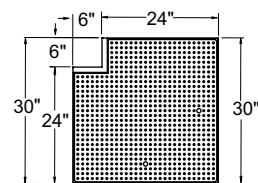


CILB-LN

CILB



COLB-LN



COLB