

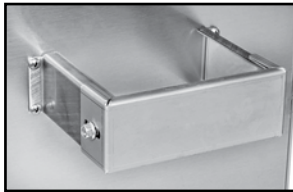
# Increase your cash flow by decreasing your trash flow

Glastender's Bottle Disintegration System reduces the volume of glass bottle waste by as much as 85%, lowering your disposal fees and paying for itself over time. The BDS unit is easy to use and crushes a bottle in mere seconds, while being no louder than a standard blender.

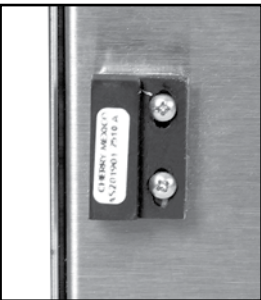
**Bottle Disintegration**



Multi-level baffle system on feed chute for safe operation and glass containment



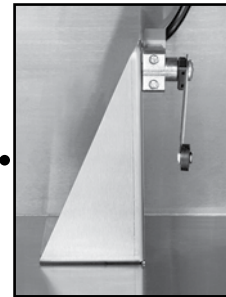
Bucket stop bar ensures bucket is fully seated when door is closed



Closed door safety sensor prevents operation when front door is open



**Includes safety interlock switches**



Bucket seating safety sensor prevents operation when the bucket is not in place

**UP TO**  
**85%**  
**VOLUME**  
**REDUCTION**



From this to this

The 4-gallon bucket weighs approximately 43 pounds and holds approximately 4 cases of disintegrated long neck beer bottles when full

## PRODUCT INFORMATION

(see BDS Spec Sheet for complete details)

### STANDARD FEATURES:

- Reduces volume of glass bottle waste by as much as 85%
- Disintegrates beer, wine, and liquor bottles up to 4" in diameter and 14" in height
- The 4-gallon bucket holds approximately 43 lbs. when full and is accessible for emptying by opening the front door (two buckets included)
- Compact design fits easily under the bar or in a service station
- It takes mere seconds to crush a bottle and is no louder than a standard blender
- Stainless steel interior and exterior resists corrosion and is easy to keep clean
- Includes safety interlock switches to ensure safe operation. The unit shuts down and a red indicator light is illuminated if the front access door is open or the bucket is not in place.
- Multi-level baffle system on feed chute and gasket seal to maximize glass containment
- Green indicator light identifies when unit is running
- Easy operation - simply turn it on and push a bottle down the feed chute
- Includes locking casters so unit can be easily moved for cleaning



BDS

Bottle Disintegration



BDS with door open showing access to bucket

### BDS

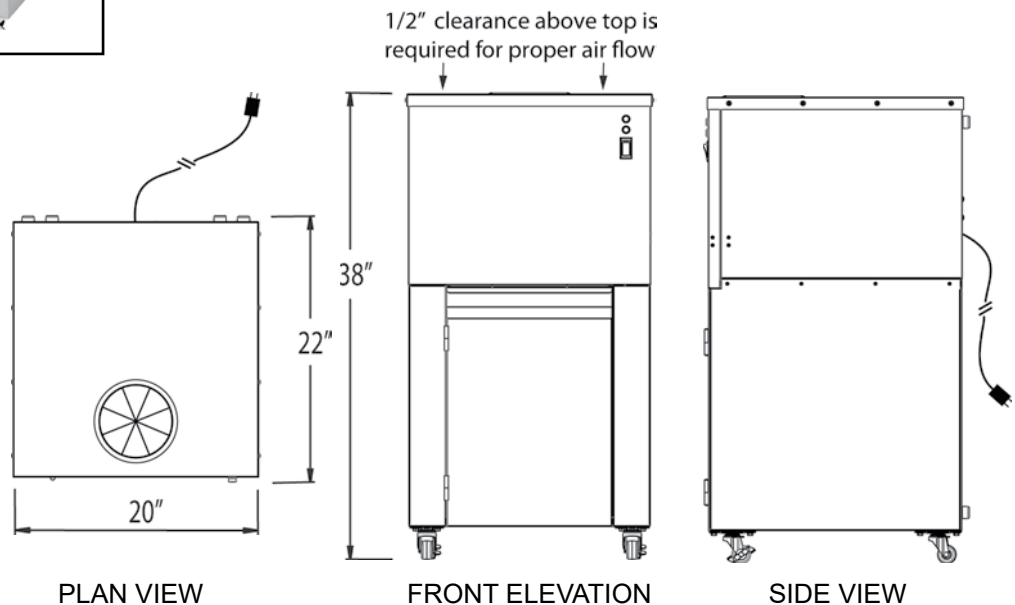
MODEL	LIST	WEIGHT	WIDTH	DEPTH	HEIGHT
BDS	\$8,428	185#	20"	22"	38"

### ACCESSORIES

MODEL	DESCRIPTION	LIST	WEIGHT
CE-BDS	Convert to 220V/50Hz or 220V/60Hz electrical	\$789	185#
14000053	Bucket (additional)	\$48	5#



14000053



PLAN VIEW

FRONT ELEVATION

SIDE VIEW