

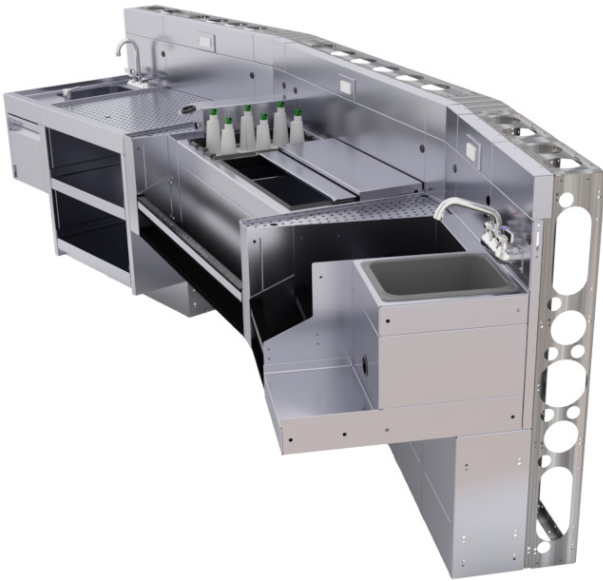
# Glastender®

MODULAR BAR DIE



# Features

**Modular bar die is a utility distribution wall for underbar equipment which eliminates leg sets for a cleaner, more attractive bar.**



## Lower Installation Cost & Reduce Installation Time

- Arrives pre-assembled from the factory in sections up to six feet long.
- Millwork bar top and front panels can be pre-fabricated and easily attached after utility work is complete.
- Factory installed LED lights and 20A GFI outlets for electrical equipment.
- Pre-engineered and manufactured to exact dimensions.

## Heavy Duty

16-gauge galvanized steel structure easily withstands 1,000 pounds per foot of downward force.

## Better Cleanability

Without underbar legs to work around, cleaning can be done more thoroughly and with less effort.

Top to bottom stainless steel finishing on bartender side.

## Sleek Appearance

Chaseways are built-in to hide beverage, plumbing, and electrical lines for a more attractive bar.



Flat Wall

Pedestal Base

Cabinet Base

Scan this code to view spec sheets, installation manuals, and pricing.

