

# Glastender®

## KITCHEN FABRICATION



# Wall Mount Hand Sinks

Glastender's all stainless steel wall-mount hand sinks are manufactured with total welded construction to meet all NSF standards. Optional heavy-duty faucets are NSF/ANSI 61 listed drinking water components and NSF/ANSI 372 listed for low lead compliance.



WH-14



All sink bowls are seamless welded to the work surface for easy cleaning.



WH-12



At 12" wide, models WH-12 and WHS-12 include a special backsplash faucet mounting bracket for easy removal and inspection of faucet after installation.



WH-14-S



While all wall-mount hand sinks are available with the optional side splash accessory, models WH-14-S and WHS-14-S feature integral side splashes, radius work surface corners for easy cleaning, and a 1" deep recessed work surface to contain splashes.

Base models WH-14, WH-12, and WH-14-S (shown left), are available with a skirt to cover the bowl. (shown below)



WHS-14



WHS-12



WHS-14-S

Model WH-14-ESD includes C-fold paper towel and built-in soap dispenser.



WH-14-ESD

Model WH-14-ESD includes a 1" deep recessed work surface to contain splashes



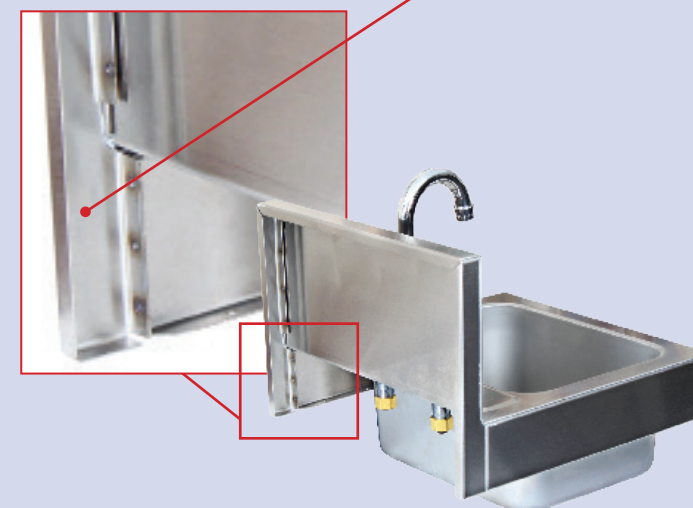
Model WDH-14 includes C-fold paper towel and built-in soap dispenser.



WDH-14



Glastender's unique hand sink design has all welded construction and uses C-channel stiffeners in the side and backsplash to provide unparalleled strength to prevent sagging.



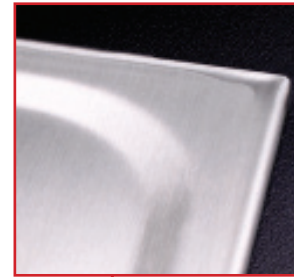
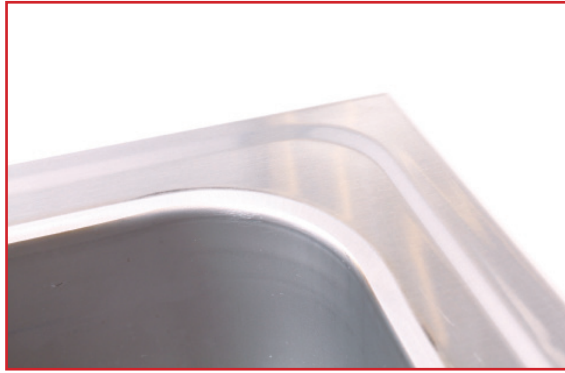
Industry standard wall-mount hand sinks are manufactured with rear corner notch fillers that create a weak spot that is prone to bending.



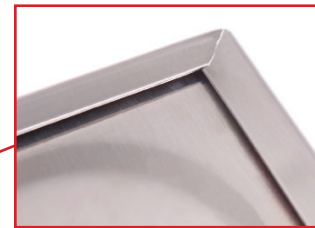
# Drop-In Hand Sinks, Ice Bins, and Combination Units

Glastender manufactures ten different drop-in models. From sinks and ice bins to water stations that include seamless welded drainboards, we can handle your service station needs.

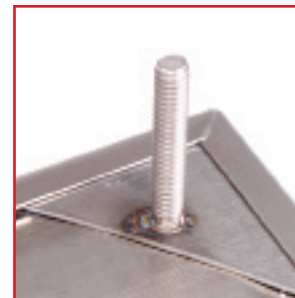
Seamless welded sink bowl satisfies stringent health code requirements.



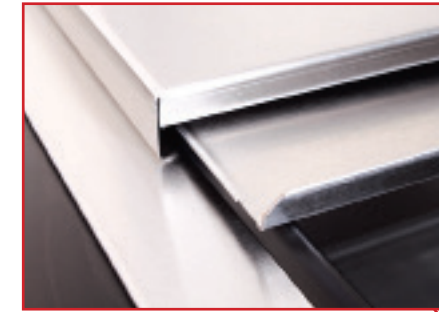
Unique hemmed edge for added strength and visual appeal.



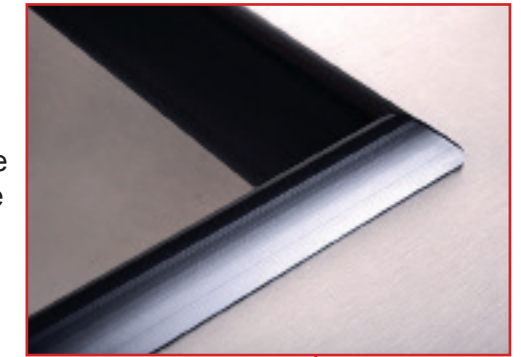
Mounting stud assembly clips into hemmed edge preventing damage to work surface when installing.



DI-HS12-LF



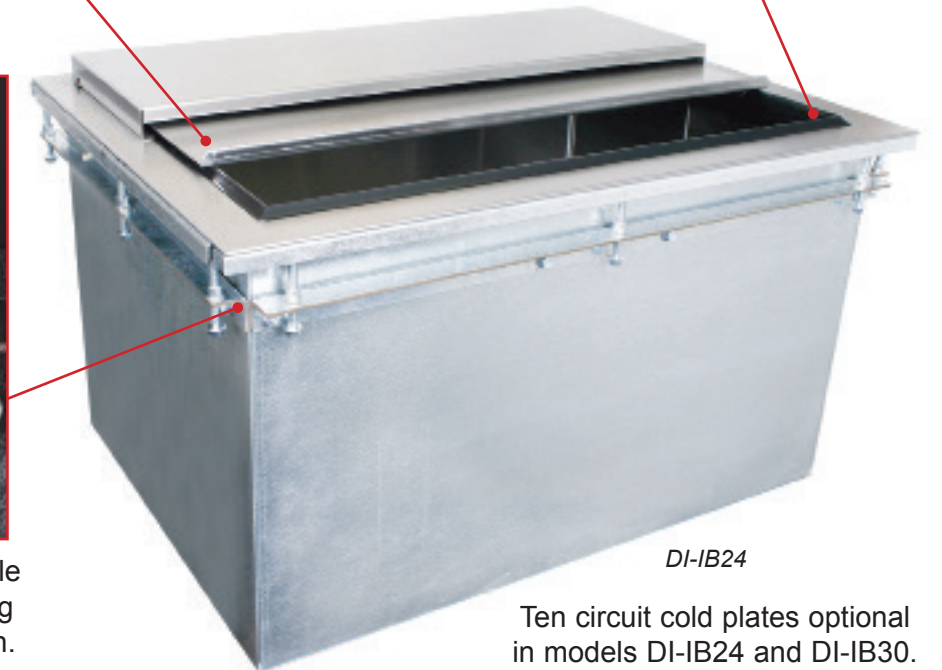
Standard two-piece sliding cover meets health code requirements.



PVC Plastic breaker strip around ice bin liner acts as a thermal barrier to minimize condensation and maximize ice life.



Drop-in ice bins feature special angle brackets, U-channels, and mounting bolts for an easy, secure installation.



DI-IB24

Ten circuit cold plates optional in models DI-IB24 and DI-IB30. (add suffix '-CP10' to model number)

Four sizes of drop-in ice bins available

Ten different models available to handle various applications



DI-HS14



DI-IB24



DI-IS24



DI-IW24

# Mobile Ice Baths

Glastender's mobile ice baths are great for iced product storage and merchandising. The units are 24" front-to-back and available in 36" or 48" lengths.

PVC plastic breaker strip around ice bin liner acts as a thermal barrier to minimize condensation and maximize ice life.

Stainless steel interior with 1/4" radius corners for easy cleaning.

Foamed-in-place insulated cabinet.

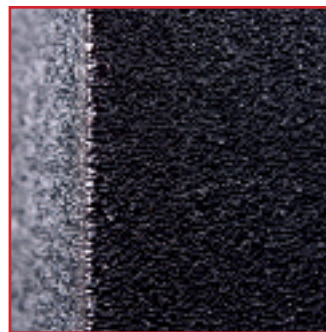
Includes a flexible drain line with on/off valve for draining when most convenient.

Built-in storage area below ice bath.

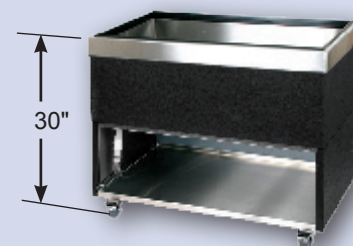
Durable black vinyl-clad exterior.

Stainless steel floor is easily removable and has 1/4" radius corners for easy cleaning.

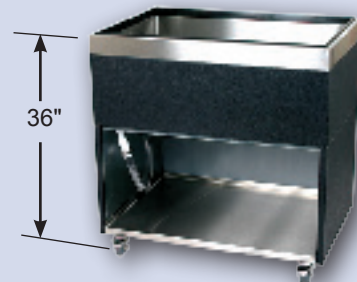
Includes four heavy duty rubberized 3" casters. (two locking)



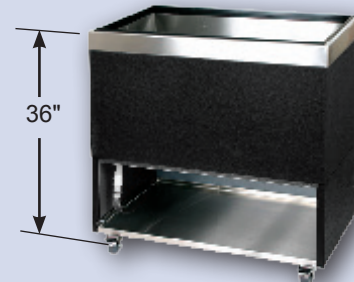
MIB-36-H



MIB-36



MIB-36-H



MIB-36-ED

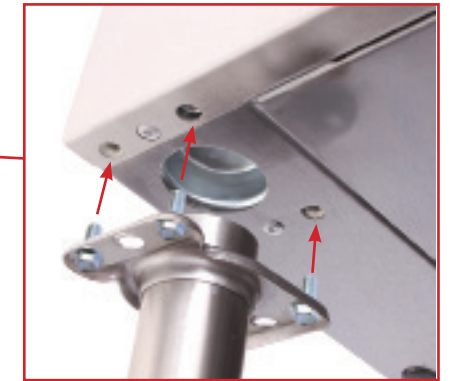
The standard models have a 30" work height. The '-H' models feature a taller cabinet base and a 36" work height. The '-ED' models feature an extra deep bath and a 36" work height.

# Mobile Ice Bin

The easy to clean all stainless steel interior and exterior construction of Glastender's mobile ice bin is designed to accommodate demanding work environments. The 18" by 30" unit includes four 4" heavy duty rubberized casters (two locking) and has a 30" high work surface.



IBM-18X30



Recessed leg tube sockets and bottom floor for extra stability and additional storage.



Includes on/off drain valve for draining when most convenient.



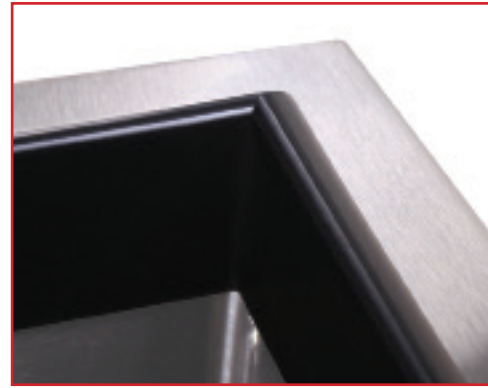
1/4" radius interior corners for easy cleaning.



Includes four heavy duty rubberized 4" casters (two locking).

# Ice Pan Holder

Glastender's ice pan holder has no drain and is small enough for easy transport, so it can be conveniently located wherever you have a need for chilled product storage.



PVC plastic breaker strip around ice bin liner acts as a thermal barrier to minimize condensation and maximize ice life.



The IB-14X22 is 14" by 22" with an 8-3/4" deep liner designed to accommodate one steam table pan (not included).



Foamed-in-place insulation for longer ice life.

The IB-14X22 can also be used without a pan as a portable ice display unit.



Includes four non-skid rubber feet to prevent countertop scuffs.

All stainless steel interior and exterior construction.

1/4" radius interior corners for easy cleaning.



# Wall Cabinets

Glastender's all 18 gauge stainless steel wall cabinets provide durable easy to clean storage for your dry goods. Available with an open front or with hinged doors in 24" to 96" lengths. The door models up to 48" have two doors and the 60" to 96" models have four doors.



WCH36



Units with doors include door locks standard for secure product storage.



Lift-off door hinges for easy removal and cleaning.



Door models have durable stainless steel hinges and handles.

Sloping top to create sanitary surface.

Includes wall mounting bracket.

Includes stationary intermediate shelf.



Door models include positive latch catch to prevent accidental opening.



Closed wall construction for an easy to clean interior.



WCO24

*Also available...*

## Kitchen Refrigeration



DI-FR

Expect more  
*more flexibility*  
more features



LC



C1SU24

# Glastender®

Glastender manufactures a variety of specialty kitchen refrigeration products to provide solutions for niche applications.

The flexibility you want. The features you need.

**Glastender. Expect more.**