

Glastender®

DIRECT DRAW COOLERS



Features

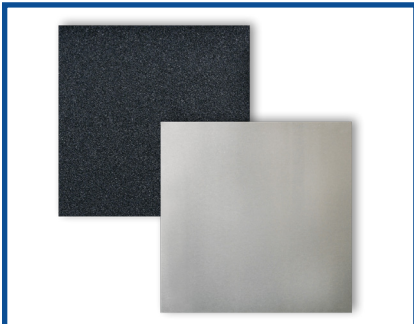
Direct Draw (-DD) models are draft beverage compatible coolers pre-configured for direct-draw systems to simplify ordering. It's as easy as selecting size and finish options - everything else is bundled in.

Select Size

		C1FB32	C1FB36	C1FB52	C1FB60	C1FB72	C1FB84	C1FB92	C1FB108
CAPACITY	1/2 BARREL	N/A	1	N/A	2	N/A	4	N/A	5
	1/6 BARREL	2	4	7	8	11	14	15	18

		C1SB20	C1SB24	C1SB28	C1SB36	C1SB44	C1SB48
CAPACITY	1/2 BARREL	N/A	1	1	N/A	N/A	2
	1/6 BARREL	2	3	4	5	7	8

Select Finishes & Tower Style



Black Vinyl-Clad or Stainless Steel



Signature, Pull-Tab, or Tube Handles



Column, Tee, or Bridge Tower

Expect More. More Flexibility. More Features.

The extensive options and accessories you've come to love are still available on all other draft beverage compatible coolers when you need more flexibility.

Complete Package Includes:

- Low pressure wall- or tank-mount gas regulator
- Gas manifold
- Gas tubing and beverage tubing
- Tower cooling kit
- 1" finished stainless top

Standard Features + Options

- Stainless steel interior
- Locking doors
- LED interior lighting
- Left- or right-side door hinging
- Left- or right-side compressor
- 6" legs or casters

Additional Accessories

- Keg couplers
- Faucet locks
- Additional faucet styles
- High pressure regulators

Scan this code for more draft beverage dispensing solutions:

